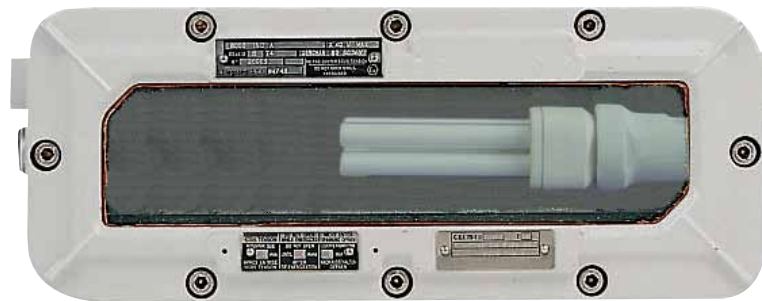


Lighting: Incandescent & HID Lighting
HBDA Series: Rectangular Bulkhead – Flameproof



Compact Fluorescent Version

Compliance Data:



ATEX – IEC:

Zone 1 & 2 – 21 & 22	ATEX	II 2 GD	IEC	CE
Ex d IIB+H2	T6 Fluorescent or T4 Incandescent	Ex tD A21	T85°C or T135°C	IP66 – IK09

Lamp Type and Power:

Compact Fluorescent	Incandescent	
1 x 18 / 20 W	2 x 40 W	

Operating Temperature:

-20°C to +40°C

Lighting: Incandescent & HID Lighting

HBDA Series: Rectangular Bulkhead – Flameproof

Zone 1 & 2 - 21 & 22

II 2 GD

ATEX / IEC

IP66 - IK09

LIGHTING

Applications:

For illumination of:

- Stairways
- Small areas
- Emergency exit

Features:

- Lamps (not supplied):
 - Incandescent 2 x 40 W
 - Compact fluorescent 1 x 18 / 20 W
- E27 lampholder.
- Operates in any position.

- Fixing by 2 brackets.
- Connection on two terminals 1 x 4 mm².
- Internal earth 1 x 4 mm².
- External earth 1 x 4 mm².
- Two M20 threaded entries.
Supplied with one aluminum blanking plug.

Standard Materials of Fixtures:

- Gray painted cast aluminum body.
- Sealed toughened lamp glass.



Compact Fluorescent Version

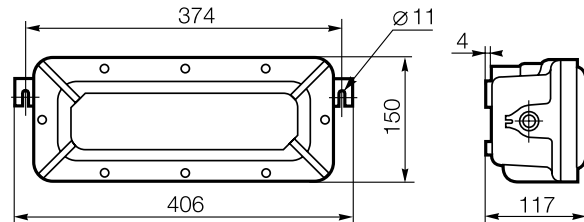
Ordering Information:

Lamp (not supplied)	Cable Entries	Weight (kg)	Volume (dm ³)	Catalog Number	Old Catalog Number	Pack
1 x 18/20 W Compact Fluorescent	M20	5.7	9	HBDAF118	094749	1
2 x 40 W Incandescent	M20	5.7	9	HBDAI240	094748	1

Compliances:

Hazardous Area	Gas	Dust
Certified Type	BRI40	
Zones	1 – 2	21 – 22
Conforming to ATEX 94/9/CE	CE 0081 II 2 G	CE 0081 II 2 D
Symbol of Protection ATEX	Ex d IIB+H2	Ex td A21
Symbol of Protection IEC		
T Rating	T4 Incandescent T6 Compact Fluor.	N.A.
Surface Temperature	N.A.	T135°C Incandescent T85°C Compact Fluor.
Ambient Temperature	-20°C to +40°C	
CE Declaration of Conformity	50252	
ATEX Certificate	LCIE 03 ATEX 6098X	
IEC Certificate	LCIE Ex 03.009X	
Other Certifications	–	
Index of Protection (solid & liquid)	IP 66	
Impact Resistance (shock)	IK09	
Internal Volume	> 2 dm ³ (2 liters)	

Dimensions (mm):

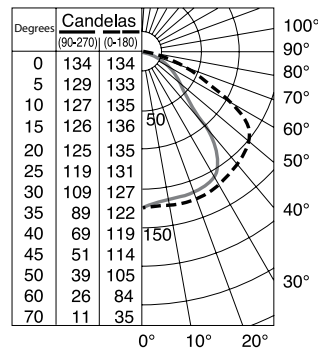


Photometric Data:

Polar curves for a 1000 lm output according to NF C 71-120

Luminaire symbol according to NF C 71-121

--- Longitudinal
— Transverse



Standards:

Ex Standards	EN / IEC 60079-0; 60079-1; 61241-0; 61241-1
Product Standards	EN / IEC 60598-1
EMC Standards	–
Other Standards	EN / IEC 60529 (IP); 62262 (IK)